



Builders & Promoters



ALLIANCE PRIME ESTATES PVT. LTD.

Registered Corporate Office :

B-104, University Marg, Bapu Nagar, Jaipur-302 015, Raj. Ph.:+91-141-4029991, 2700675

E-mail : info@alliance.org.in • Website : www.alliance.org.in

Udaipur Office :

404, Bhupalpura, Udaipur-313001, Rajasthan, Phone : 0294 - 2412530

Alliance Anand Site : Devali, Goverdhan Villas, Near Jeevantara Resort, Udaipur.

Disclaimer : All the plans, drawings etc, are subject to the approval of the respective authorities and would be changed, if necessary, the discretion remains with the developers. This brochure is for illustrative purpose only and it can not be in any way treated as legal document.

Dot 'W' Dash @0141-2221991, 98292 31611



welcome to the duplex living...



@ Devali, Goverdhan Villas, Near Jeevantara Resort, Udaipur.



ALLIANCE
anand
Independent Luxury Villas

After a grand success of Alliance Anmol, Alliance Prime Estates present another Premium Residential Villas 'Alliance Anand'

According to Alliance, home should be a space to recharge you with life. And that's why we don't make them structures but we create space where life breathes, happiness multiplies, families come together and individual blossoms. Add to that the essential facilities and amenities to make life simple, easy, stress free and comfortable. Nestled in the lap of nature, this harmonious property will be undoubtedly one of the most admirable housing villas in Udaipur. 'Alliance Anand' has a range of Independent villas to suit your budget perfectly. Each Villa is tastefully carved out to create adequate living space for the family as well as corner for individual pursuit.

The project is located amidst the most exclusive and magnificent surrounding of Aravali Hills with a blend of very thoughtfully planned & state-of-the-art amenities. 'Alliance Anand' is going to add taste of happiness and infuse an extra dash of pleasure in your lives.





ALLIANCE
anand
Independent Luxury Villas

This is the place to be. A premium Residential community of Eighteen exclusive villas, each stretching over an area of around 2500 sft. The contemporary design accentuates the sheer spaciousness, with spaces provided for every activity. As sunlight and breeze filter in through the large windows and play across the open terraces and sit-outs, you realize that you are finally in charge of your life! These Villas are about extra large bedrooms, huge kitchen area and world-class amenities. **Expand yourself!**





ALLIANCE
anand
Independent Luxury Villas

Enjoy a complete neighborhood!





Inspired by you. A new way of life. A new destination. A private world of boundless joy, stretching as far as your imagination. Alliance presents 'Alliance Anand' for those who believe in mega-living. Come, stretch the frontiers...

Live an unfettered life!

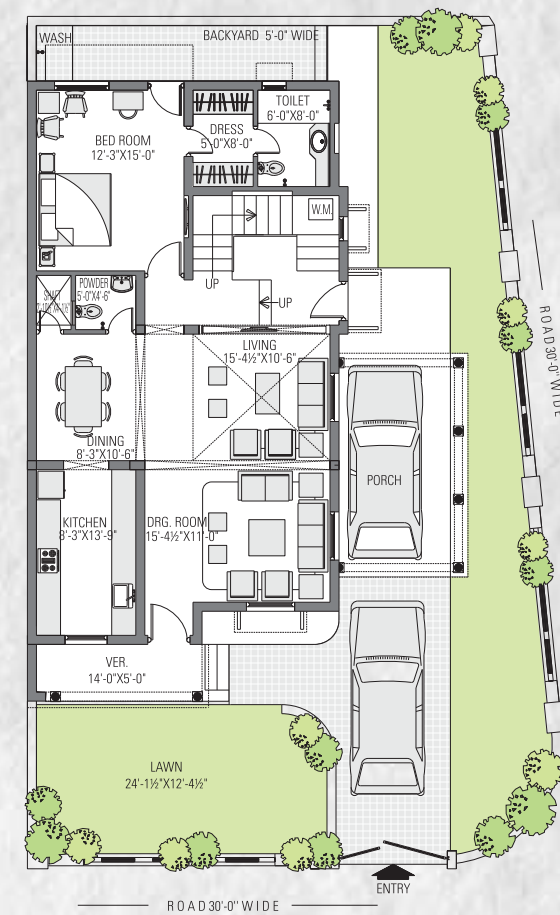


ALLIANCE
anand
Independent Luxury Villas

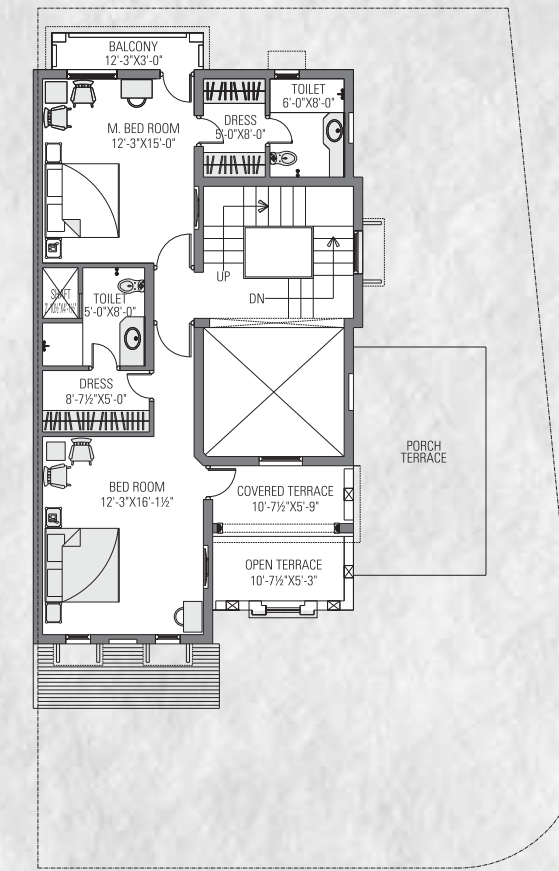
ALLIANCE
anand
Independent Luxury Villas

VILLA No. 14

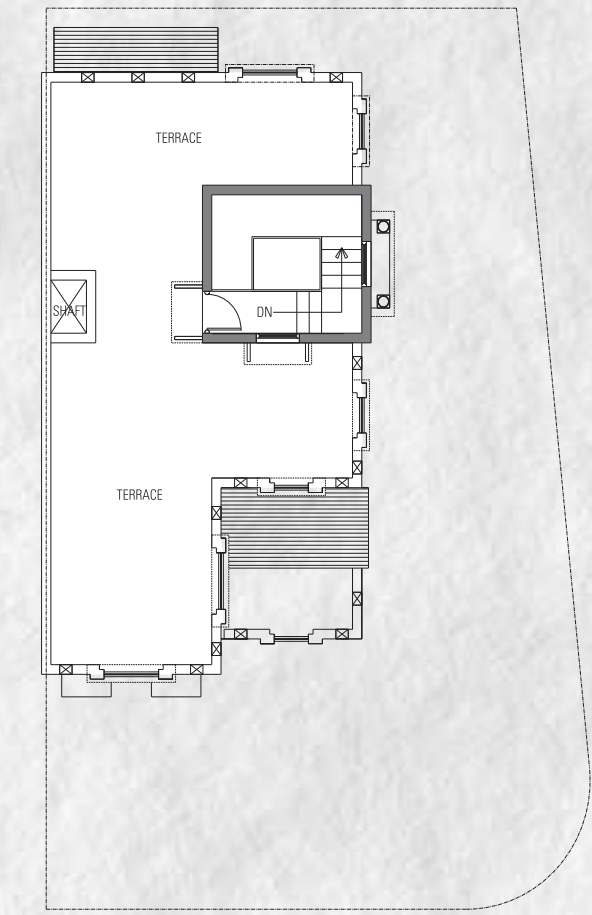
VILLA No. 29



GROUND FLOOR



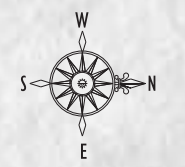
FIRST FLOOR



TERRACE FLOOR

TYPE
A

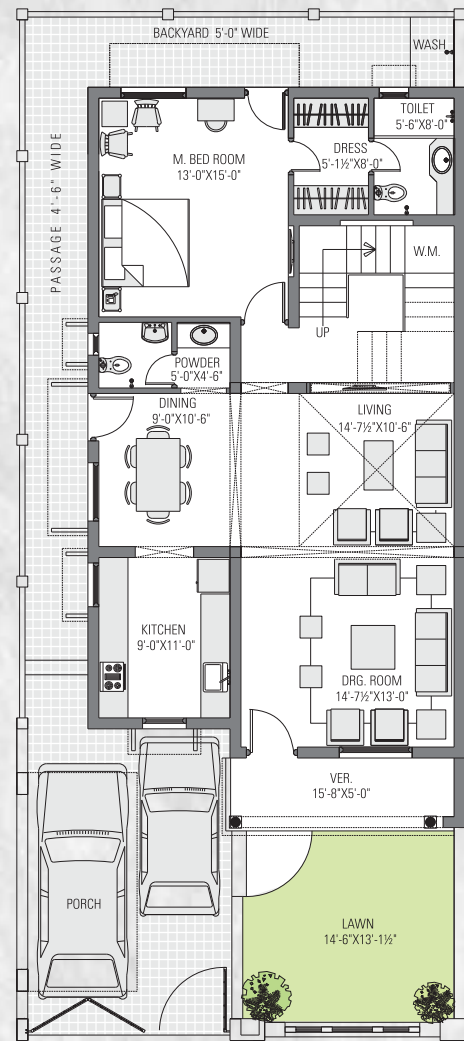
VILLA No.14



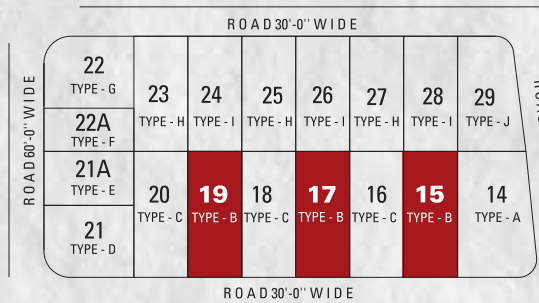
ROAD 30'-0" WIDE								
22 TYPE - G	23 TYPE - H	24 TYPE - I	25 TYPE - H	26 TYPE - I	27 TYPE - H	28 TYPE - I	29 TYPE - J	
22A TYPE - F	20 TYPE - C	19 TYPE - B	18 TYPE - C	17 TYPE - B	16 TYPE - C	15 TYPE - B	14 TYPE - A	
21A TYPE - E								
21 TYPE - D								
ROAD 30'-0" WIDE								

KEY PLAN

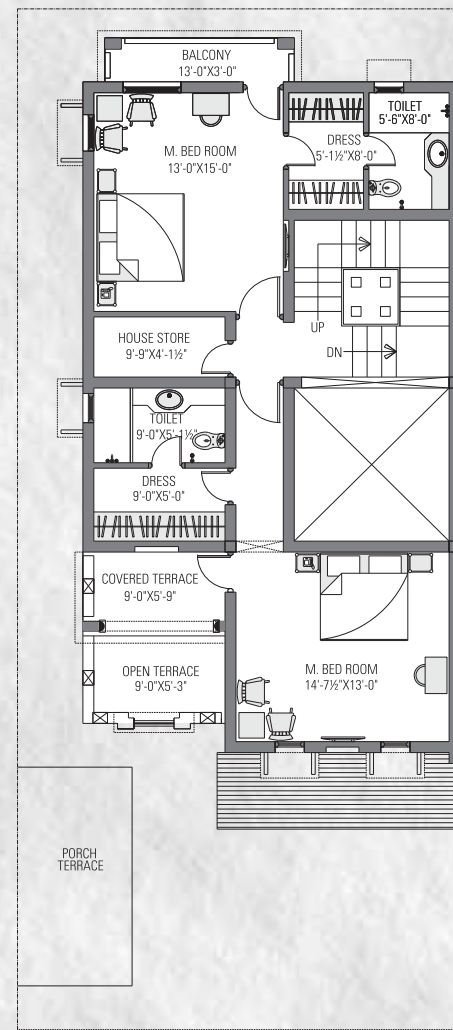
LAND AREA = 2878 SQF.	320 SQY.
COVERED AREA	
GROUND FLOOR	1483 SQF.
FIRST FLOOR	1157 SQF.
STAIR ROOM	167 SQF.
TOTAL AREA	2807 SQF.



GROUND FLOOR



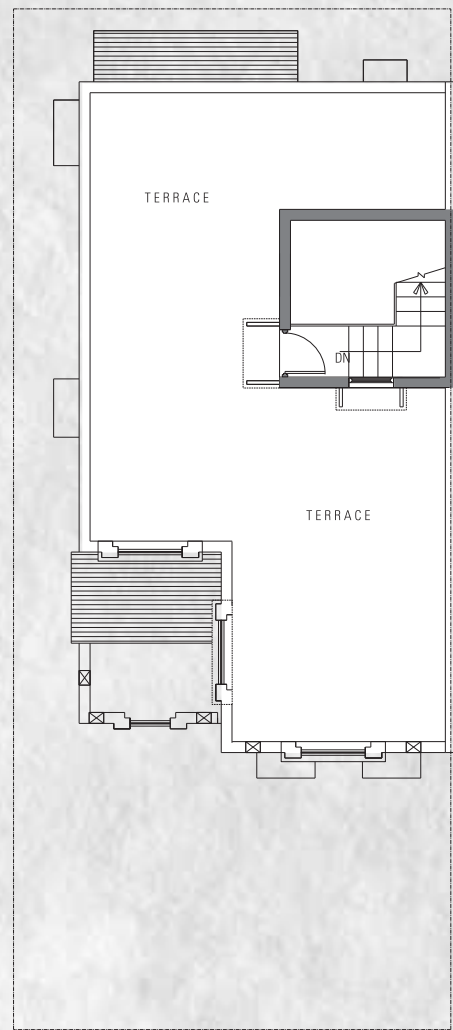
KEY PLAN



FIRST FLOOR

LAND AREA=30'X70'=2100 SQF. 233.33 SOY.

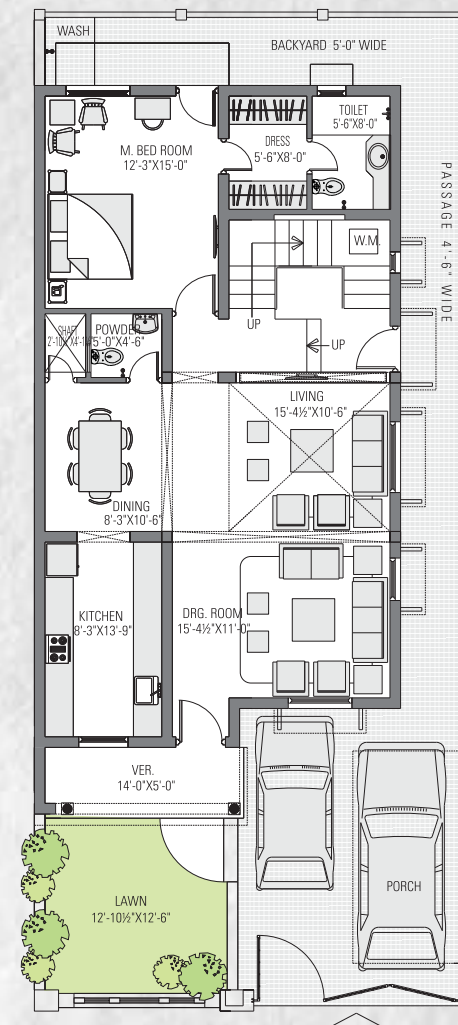
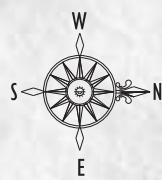
COVERED AREA	
GROUND FLOOR	1397 SQF.
FIRST FLOOR	1152 SQF.
STAIR ROOM	149 SQF.
TOTAL AREA	2698 SQF.



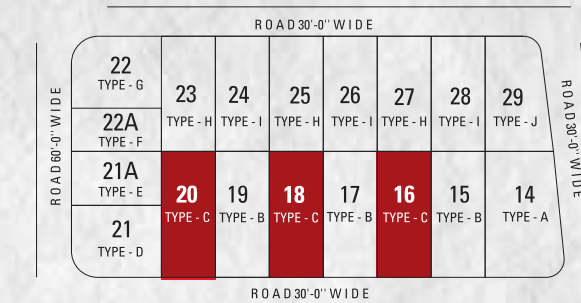
TERRACE FLOOR



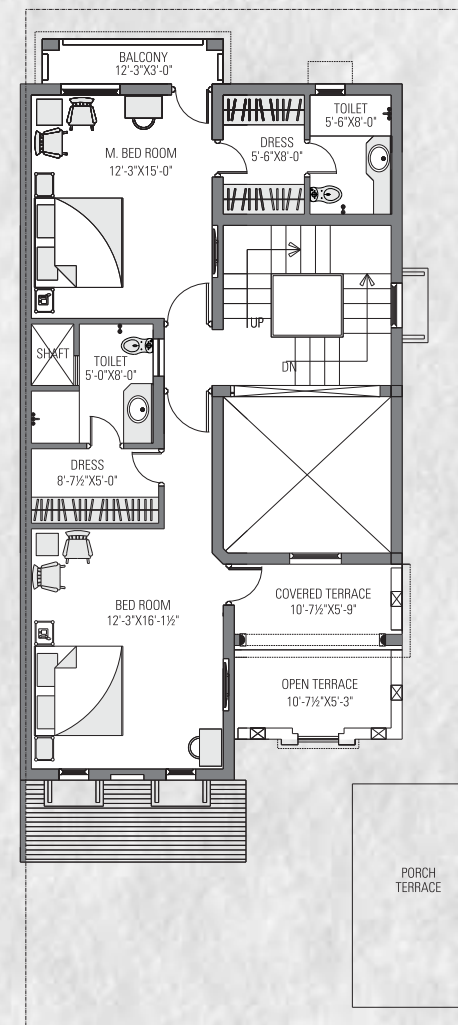
VILLA No. 15,17 &19



GROUND FLOOR



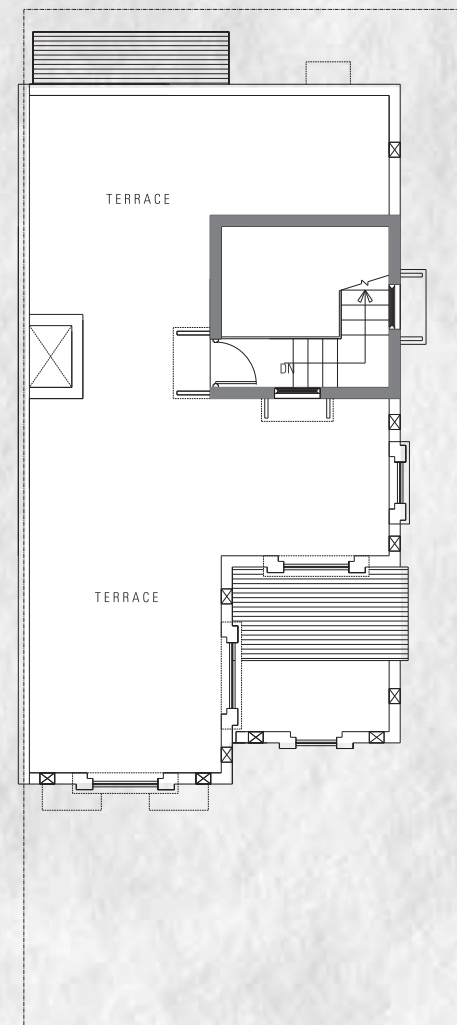
KEY PLAN



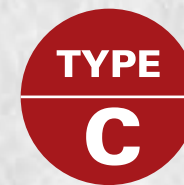
FIRST FLOOR

LAND AREA = 30'X70'=2100 SQF. 233.33 SQY.

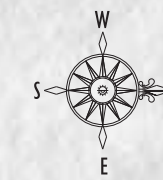
COVERED AREA	
GROUND FLOOR	1396 SQF.
FIRST FLOOR	1148 SQF.
STAIR ROOM	158 SQF.
TOTAL AREA	2702 SQF.



TERRACE FLOOR

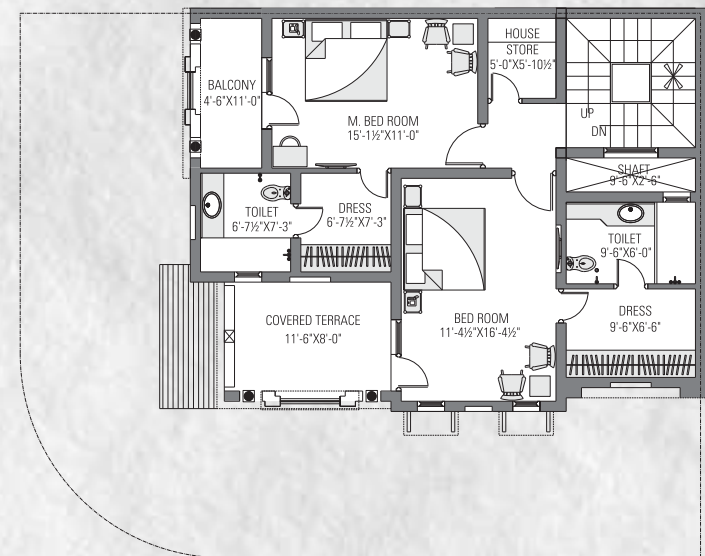


VILLA No. 16,18 & 20





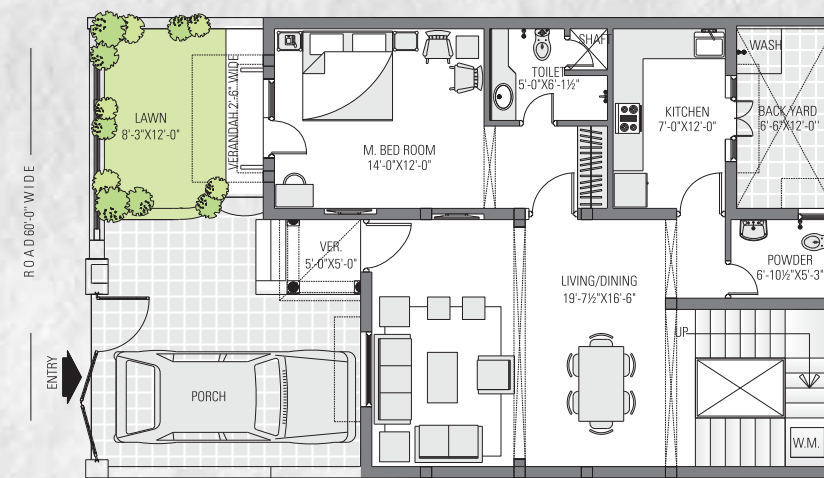
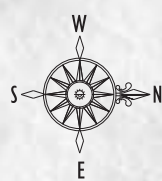
GROUND FLOOR



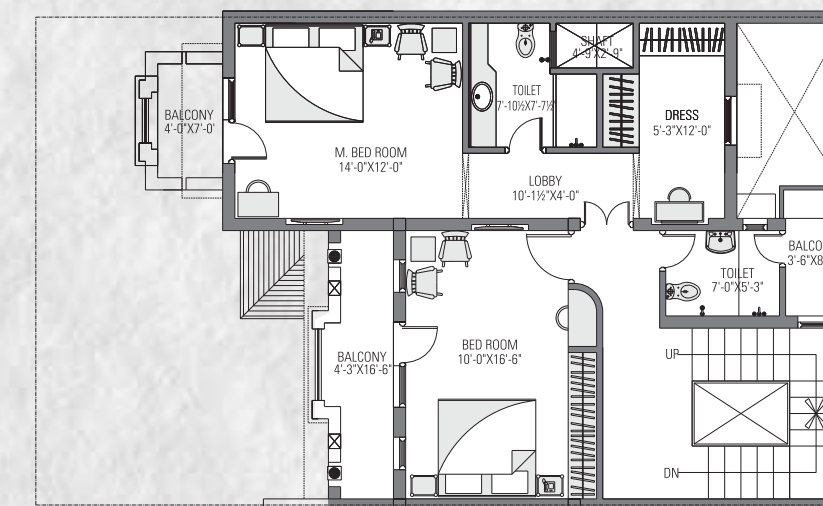
FIRST FLOOR



VILLA No. : 21



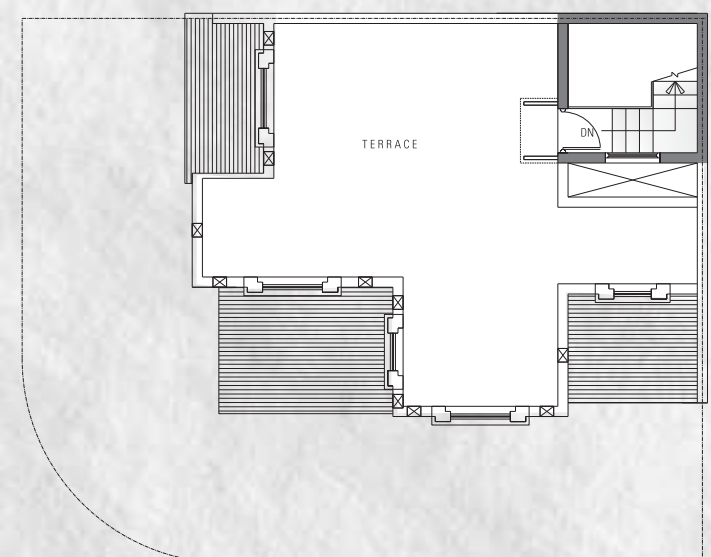
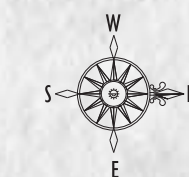
GROUND FLOOR



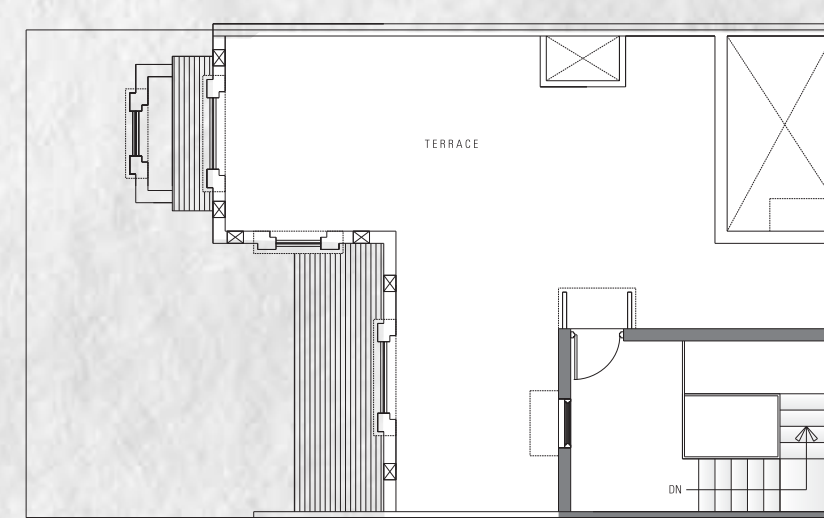
FIRST FLOOR



VILLA No. : 21A



TERRACE FLOOR



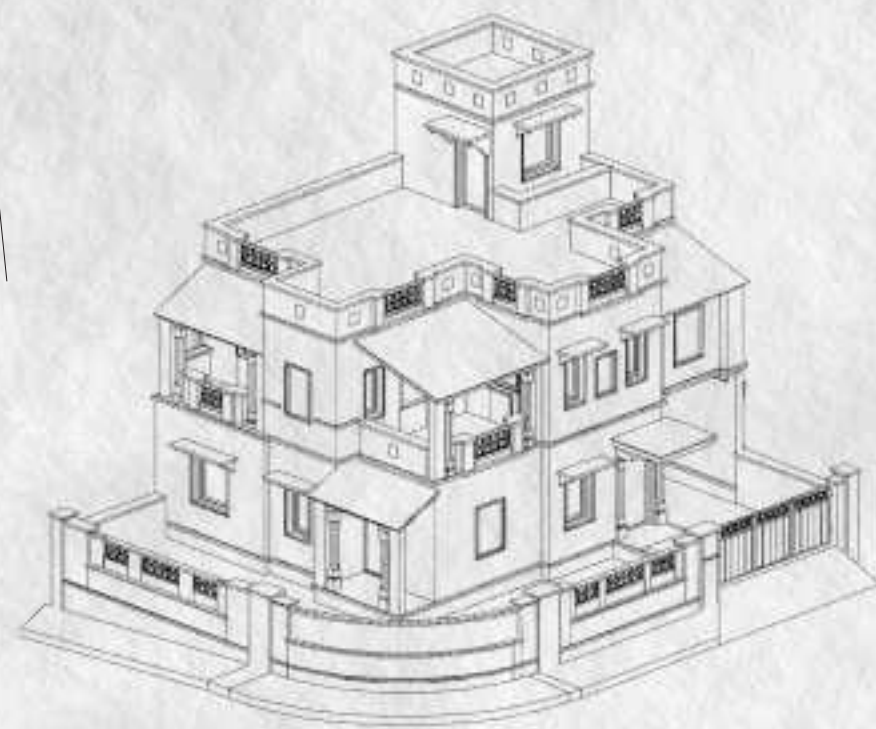
TERRACE FLOOR

ROAD 30'-0" WIDE							
22 TYPE - G	23	24	25	26	27	28	29
22A TYPE - F	TYPE - H	TYPE - I	TYPE - H	TYPE - I	TYPE - H	TYPE - I	TYPE - J
21A TYPE - E	20	19	18	17	16	15	14
21 TYPE - D	TYPE - C	TYPE - B	TYPE - C	TYPE - B	TYPE - C	TYPE - B	TYPE - A
ROAD 30'-0" WIDE							

KEY PLAN

LAND AREA = 1952 SQF. 216.88 SQY.

COVERED AREA	
GROUND FLOOR	1135 SQF.
FIRST FLOOR	1072 SQF.
STAIR ROOM	117 SQF.
TOTAL AREA	2324 SQF.



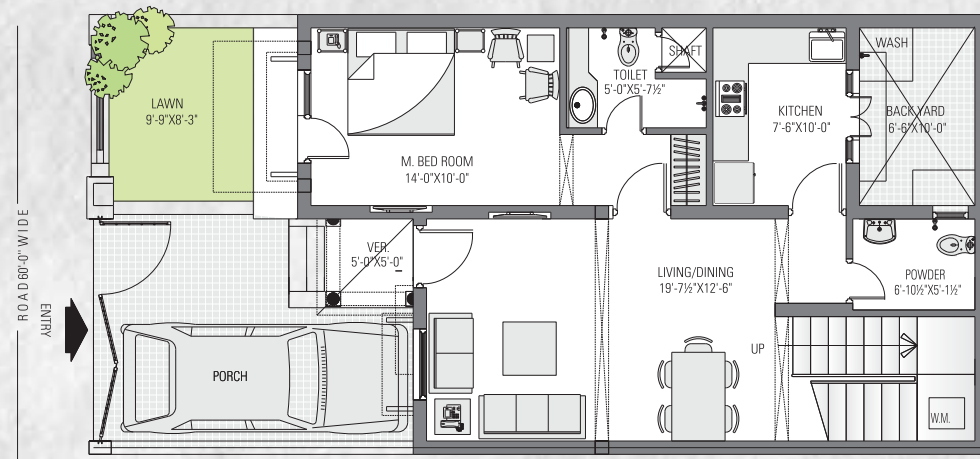
ROAD 30'-0" WIDE							
22 TYPE - G	23	24	25	26	27	28	29
22A TYPE - F	TYPE - H	TYPE - I	TYPE - H	TYPE - I	TYPE - H	TYPE - I	TYPE - J
21A TYPE - E	20	19	18	17	16	15	14
21 TYPE - D	TYPE - C	TYPE - B	TYPE - C	TYPE - B	TYPE - C	TYPE - B	TYPE - A
ROAD 30'-0" WIDE							

KEY PLAN

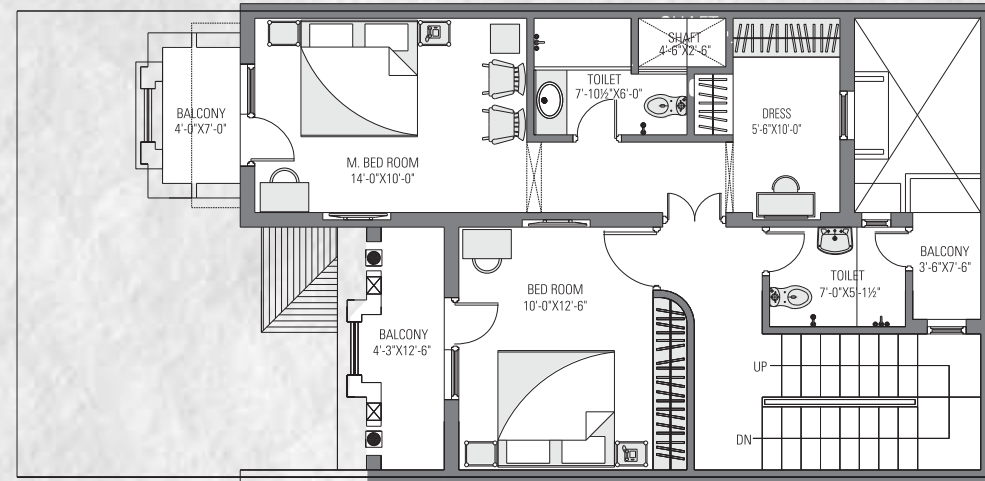
LAND AREA = 30'X50'=1500 SQF. 166.66 SQY.

COVERED AREA	
GROUND FLOOR	1115 SQF.
FIRST FLOOR	1009 SQF.
STAIR ROOM	205 SQF.
TOTAL AREA	2329 SQF.





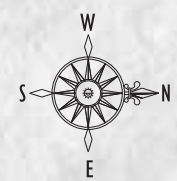
GROUND FLOOR



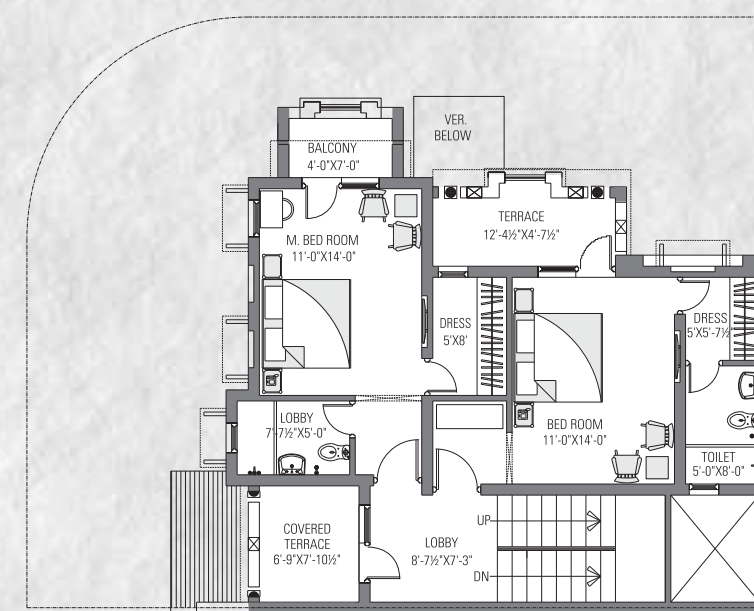
FIRST FLOOR



VILLA No. : 22A



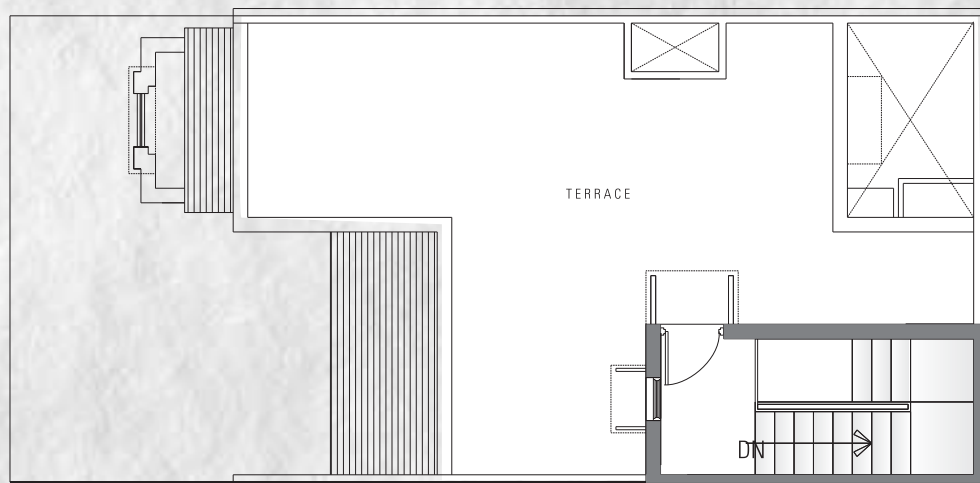
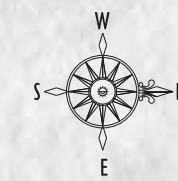
GROUND FLOOR



FIRST FLOOR



VILLA No. : 22



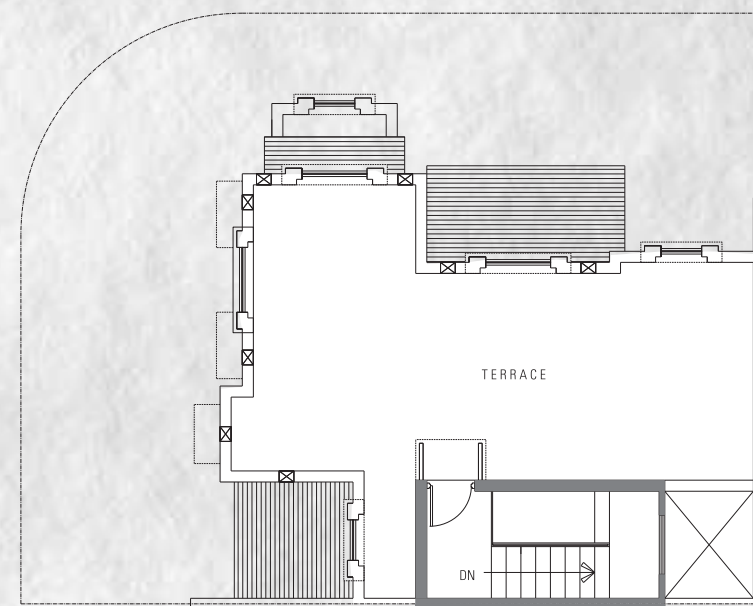
TERRACE FLOOR

ROAD 30'-0" WIDE							
22 TYPE - G	23	24	25	26	27	28	29
22A TYPE - F	TYPE - H	TYPE - I	TYPE - H	TYPE - I	TYPE - H	TYPE - I	TYPE - J
21A TYPE - E	20	19	18	17	16	15	14
21 TYPE - D	TYPE - C	TYPE - B	TYPE - C	TYPE - B	TYPE - C	TYPE - B	TYPE - A
ROAD 30'-0" WIDE							

KEY PLAN

LAND AREA = 24'X 50' = 1200 SQF. **133.33 SQY.**

COVERED AREA	
GROUND FLOOR	913 SQF.
FIRST FLOOR	812 SQF.
STAIR ROOM	150 SQF.
TOTAL AREA	1875 SQF.



TERRACE FLOOR

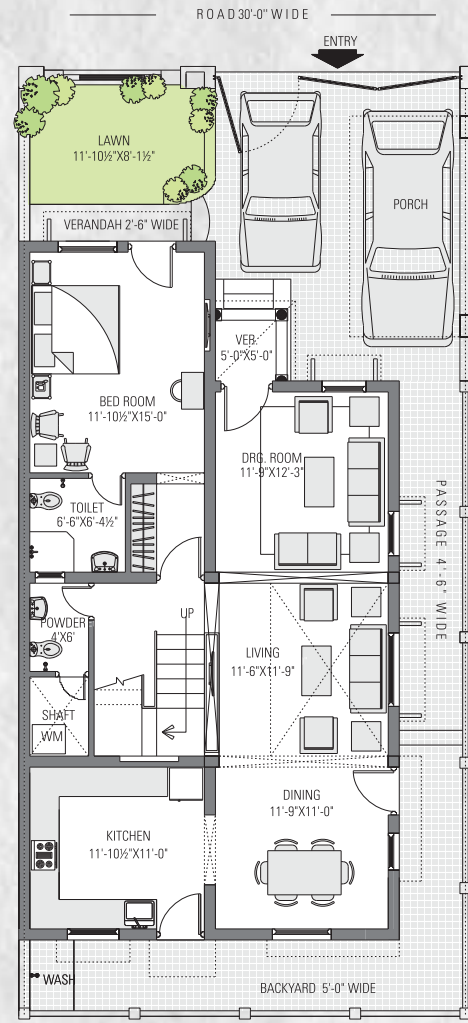
ROAD 30'-0" WIDE							
22 TYPE - G	23	24	25	26	27	28	29
22A TYPE - F	TYPE - H	TYPE - I	TYPE - H	TYPE - I	TYPE - H	TYPE - I	TYPE - J
21A TYPE - E	20	19	18	17	16	15	14
21 TYPE - D	TYPE - C	TYPE - B	TYPE - C	TYPE - B	TYPE - C	TYPE - B	TYPE - A
ROAD 30'-0" WIDE							

KEY PLAN

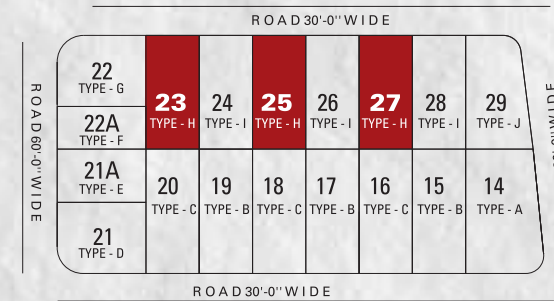
LAND AREA = 1952 SQF. **216.88 SQY.**

COVERED AREA	
GROUND FLOOR	1091 SQF.
FIRST FLOOR	968 SQF.
STAIR ROOM	148 SQF.
TOTAL AREA	2207 SQF.

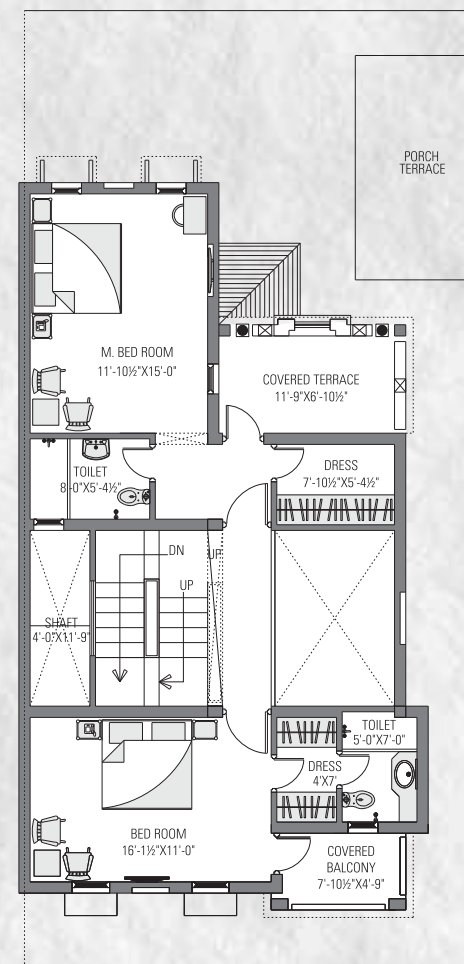




GROUND FLOOR



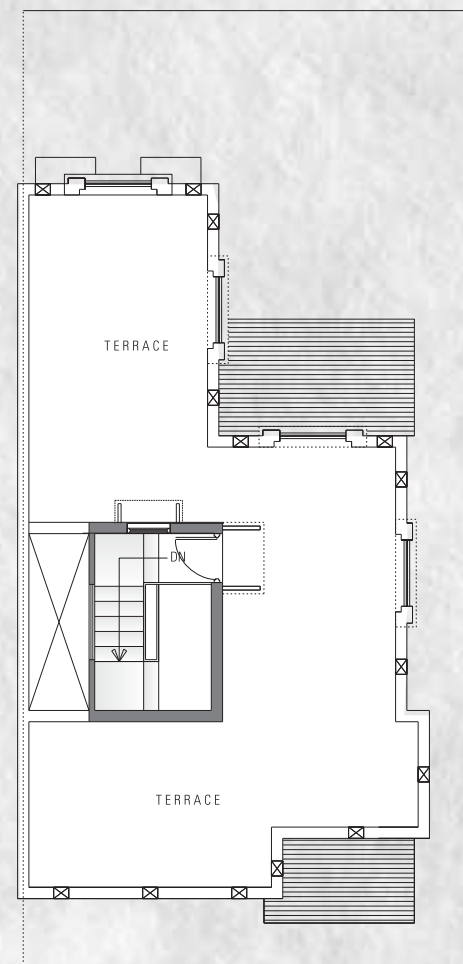
KEY PLAN



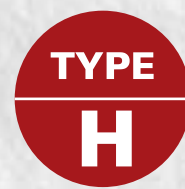
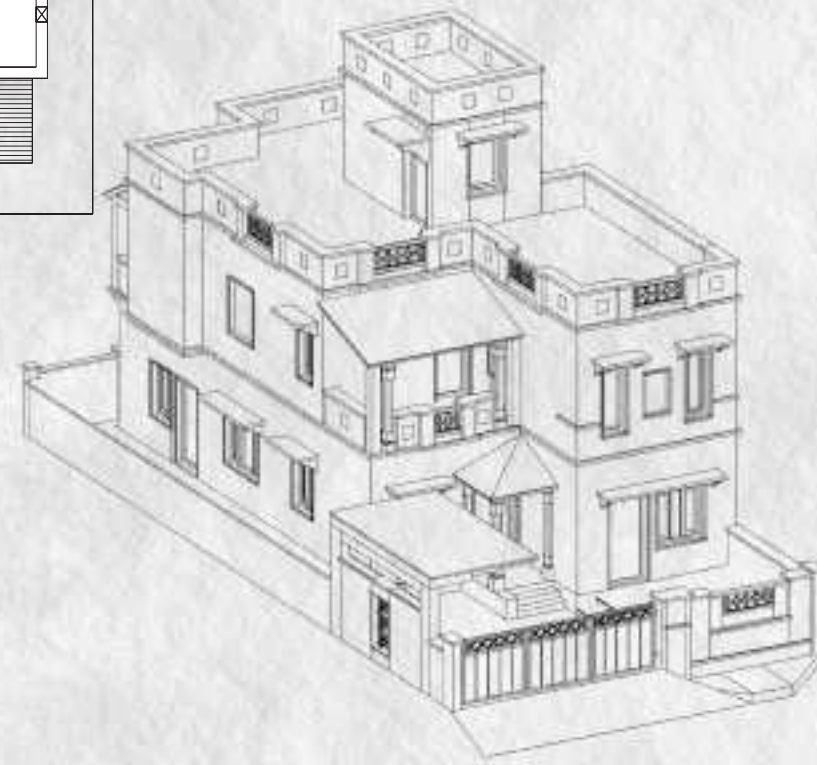
FIRST FLOOR

LAND AREA = 30'X 64' = 1920 SQF. **213.33 SQY.**

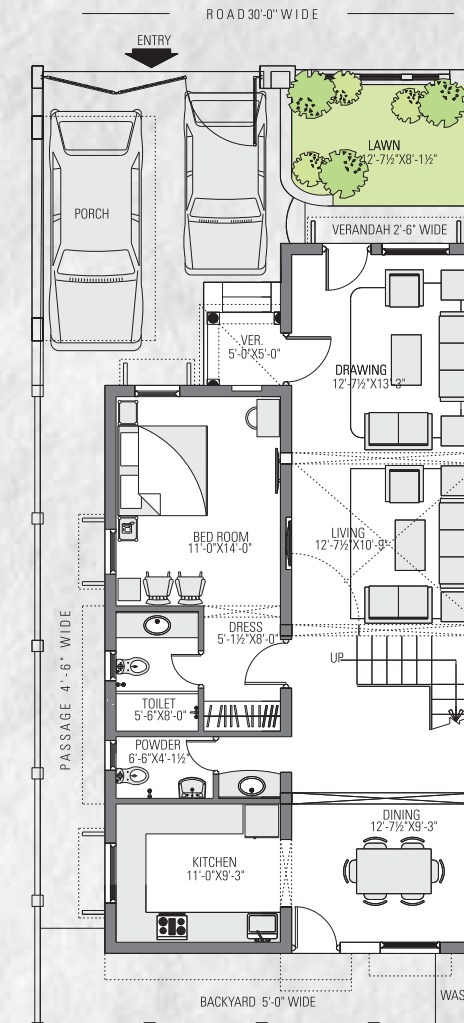
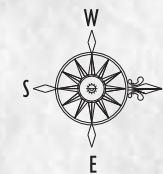
COVERED AREA	
GROUND FLOOR	1263 SQF.
FIRST FLOOR	1133 SQF.
STAIR ROOM	118 SQF.
TOTAL AREA	2514 SQF.



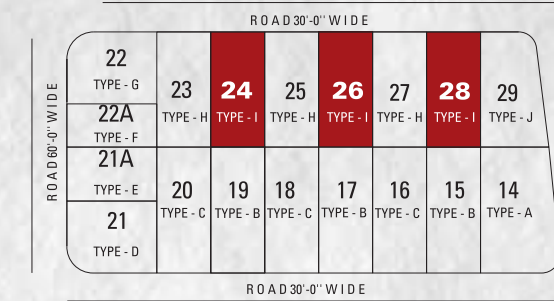
TERRACE FLOOR



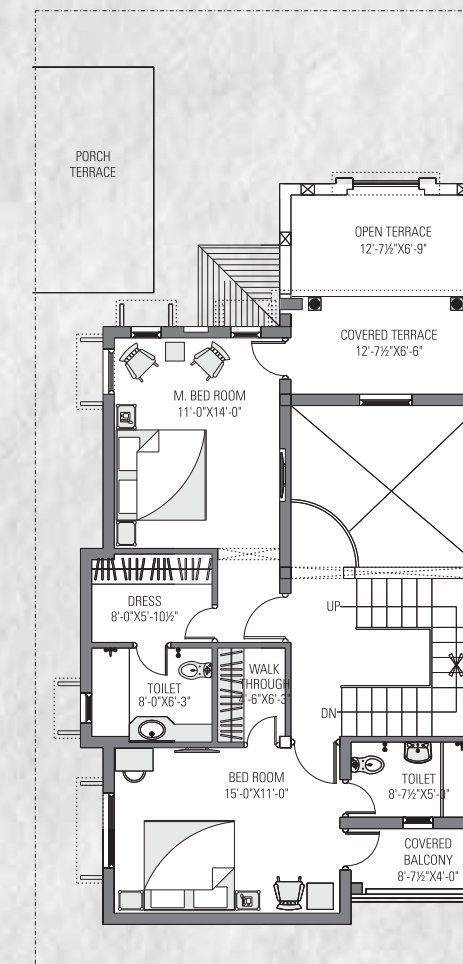
VILLA No. 23,25 & 27



GROUND FLOOR



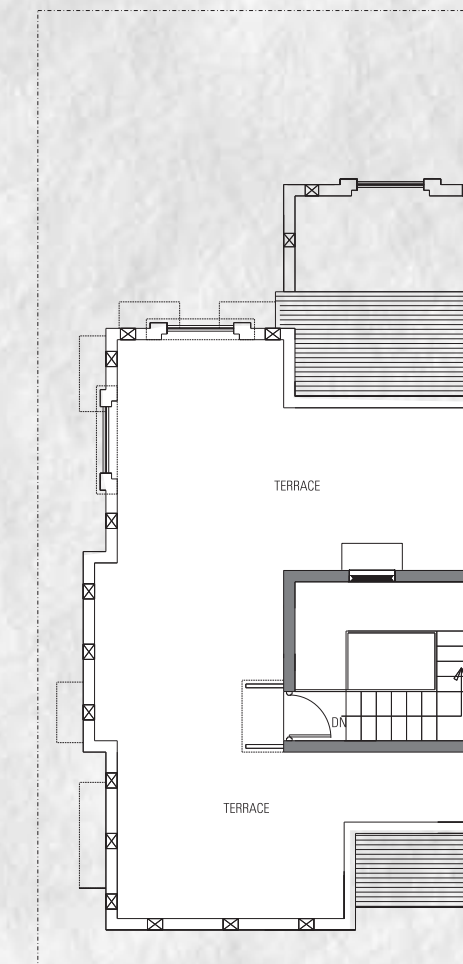
KEY PLAN



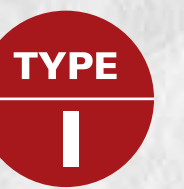
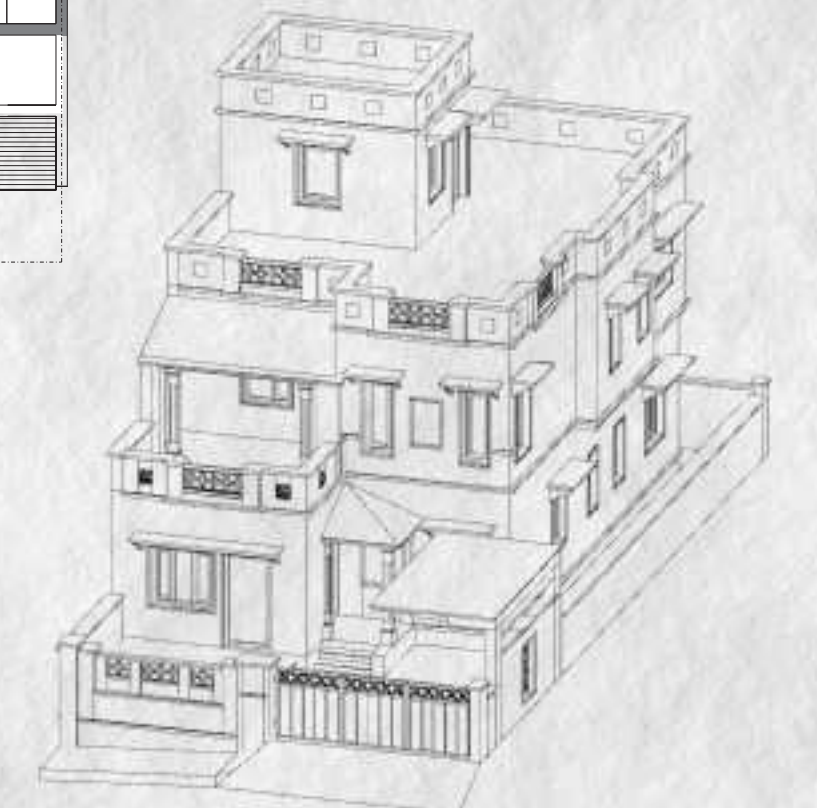
FIRST FLOOR

LAND AREA = 30'X64' = 1920 SQF. **213.33 SQY.**

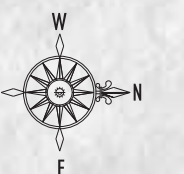
COVERED AREA	
GROUND FLOOR	1296 SQF.
FIRST FLOOR	1055 SQF.
STAIR ROOM	170 SQF.
TOTAL AREA	2521 SQF.

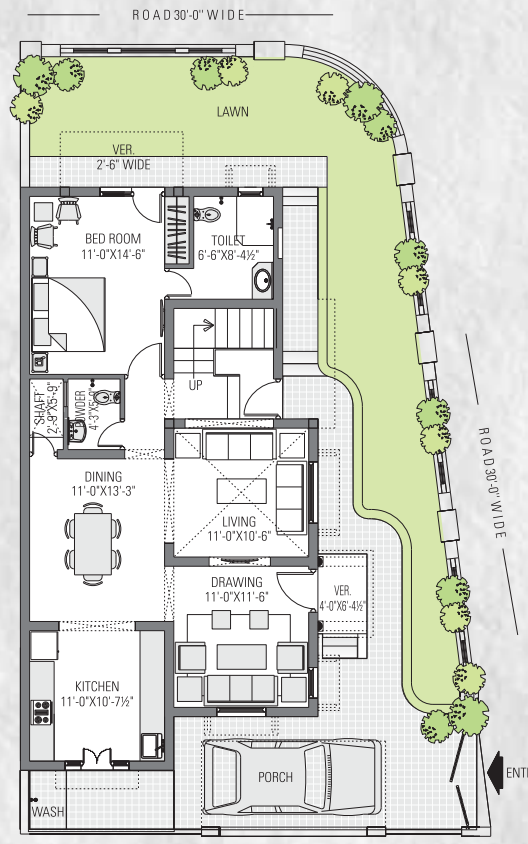


TERRACE FLOOR



VILLA No. 24,26 & 28

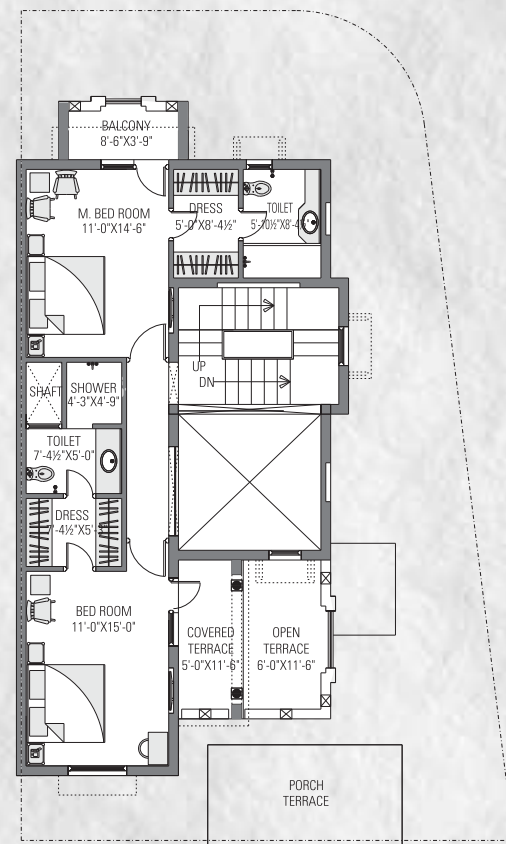




GROUND FLOOR



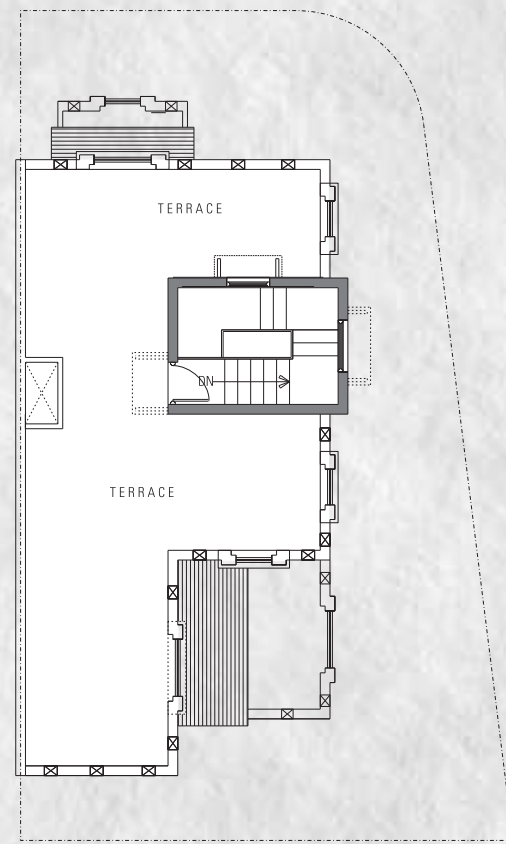
KEY PLAN



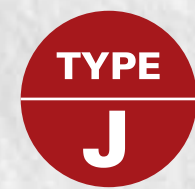
FIRST FLOOR

LAND AREA = 2160 SQF. 240 SQF.

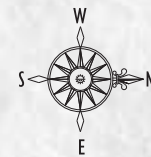
COVERED AREA	
GROUND FLOOR	1290 SQF.
FIRST FLOOR	1050 SQF.
STAIR ROOM	146 SQF.
TOTAL AREA	2486 SQF.



TERRACE FLOOR



VILLA No. : 29



FEATURES

Structure

- R.C.C. / load bearing composite structure with brick walls and cement plaster.

Vastu

- All the villas are designed as per vastu shastra of house.

Flooring

- Vitrified tile / stone flooring in all interior areas.
- Ceramic tiles in toilets with dado height up to door frame.
- Cement pavers / rough stone in driveway, outside open passages & rear open space.

Doors & Windows

- Well designed wooden main door of 30 mm thickness.
- Windows having glass panels/wire mesh panels with safety grills.

- Fittings of good quality on doors & windows.

Kitchen

- Granite work top counter with provision of modular kitchen.
- Stainless steel sink.
- 2 feet ceramic tile dado above counter.
- Exhaust fan, hot and cold mixer.

Toilets

- Ceramic tile dado up to door frame.
- Anti-skid ceramic tiles on floor.
- Hot & cold water pipes.
- Premium quality CP fittings & fixtures.
- Granite counter top basin and mirror on walls.

Painting

- Premium emulsion/Plastic paint for all interior walls with base coat of POP.
- Premium emulsion exterior paint on all

exterior walls with base coat of white putty.

Electrical

- Premium quality modular switches & accessories.
- Concealed conduits with fire retardant copper wires.
- Provision of Split AC in all the rooms.

Water Supply

- Underground Sump and overhead water storage tanks in each villas.

Telephone

- Telephone points in drawing, living, dining, kitchen & all bed rooms.

Television

- TV points in all bedrooms, living room and family room..



THE GROUP



ALLIANCE
Redefining the luxury

Welcome to Alliance, a trusted name in the business of building dreams and developing the nation through its modern luxury design. The Alliance Group combines strength of construction and high build quality with a truly executive level of decoration and finishing touches. If u care about quality, you will immediately feel at home in Alliance Properties. The company has been focusing on promoting a series of independent residential villas in several areas in the Rajasthan. All the ventures promoted by the firm so far have been highly successful. The company is currently carrying out extensive construction activity at various locations in Rajasthan.



ALLIANCE
amrit independent villas



@ Nandan Vihar, near Gyan Vihar University & Eng. College, Jagatpura, Jaipur

ALLIANCE
amrit independent villas



@ Bank Officers 'E' Block, Jagatpura, Ramnagriya, Jaipur

ALLIANCE
anmol independent villas



@ Bhuwana, Near Celebration Mall, Udaipur



LOCATION

Alliance Anand Site : @ Devali, Goverdhan Villas, Near Jeevantara Resort, Udaipur.